



# **IP-1W**

*WIFI MODULE*

## **INSTALLATION MNUAL**



## **IMPORTANT NOTES**

- The following manual has been prepared to provide assistance to users who use the system. All those who use the systems listed in this manual must be authorized.
- The information contained in this document are property of AMC Elettronica s.r.l.
- All information contained in this document is subject to change without notice.
- Every part of this manual should be interpreted and used only for the purposes for which it was drafted, the use other than as prescribed must be authorized by AMC Elettronica srl, under penalty of forfeiture of the guarantee.
- All trademarks, symbols and examples contained in this manual belong to their respective owners.

## **GUARANTEE**

AMC Electronics s.r.l. ensures that products are free from defects in workmanship.

The product is not installed by the manufacturer and can be used with other products not manufactured by AMC Elettronica srl, the manufacturer does not guarantee or be held responsible for damage and / or theft or other types of issues caused by an incorrect installation and / or configuration of the system.

Is not guaranteed to:

- improper use of the panel
- programming errors
- manipulation and vandalism
- wear and tear
- lightning, floods, fire.

AMC Electronics s.r.l. reserves the right to repair or replace the defective product within the limits established for 24 months.

A different use from that stated in this manual will void the warranty.

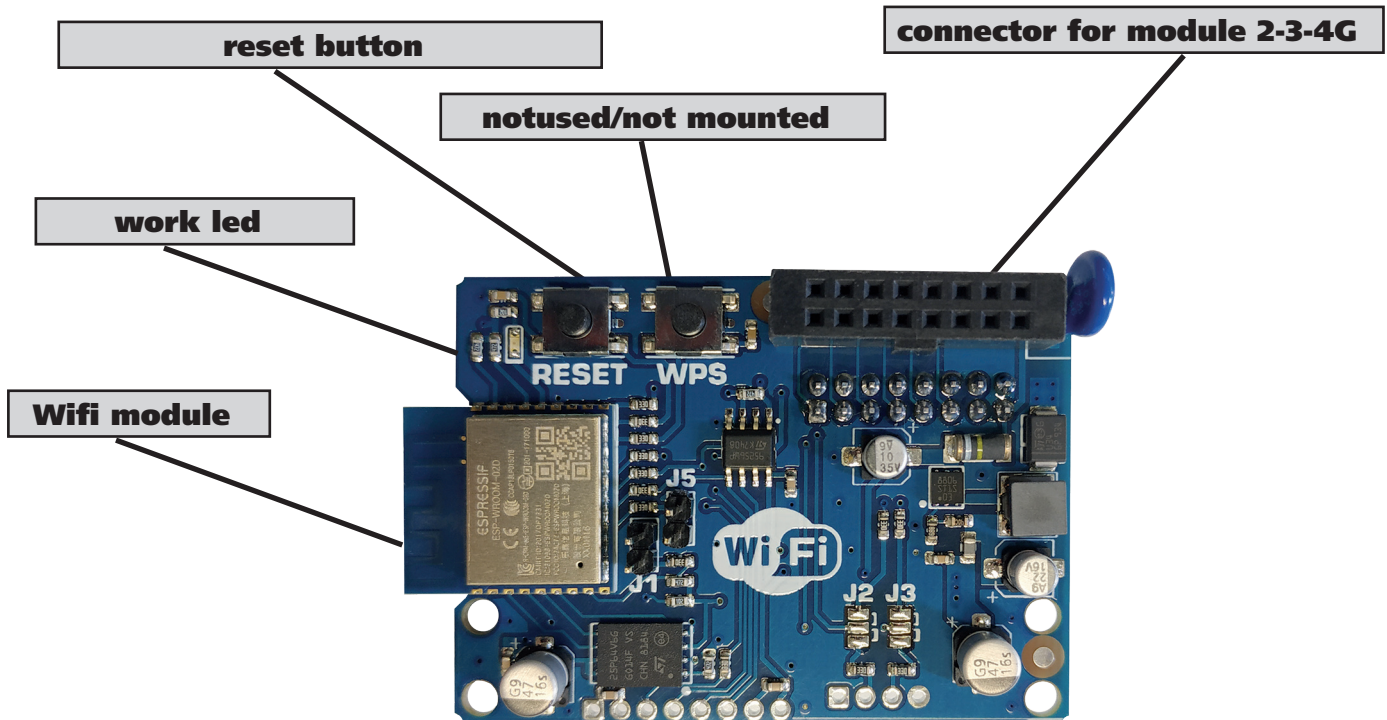
The installation must be performed in a workmanlike manner by qualified personnel.

## IP-1W - DESCRIPTION

IP-1W is an IP card that uses the WiFi connection to work, it is compatible with all X - K and XR800 series control panels from version 4.1 onwards.

For the first configuration with the control panel, it is possible to use the software or a keyboard with the aid of a mobile phone. This card performs everything that the wired version did with greater speed and efficiency in connection to the Cluod.

## IP-1W - BOARD



## SPECIFICATIONS IP BOARD

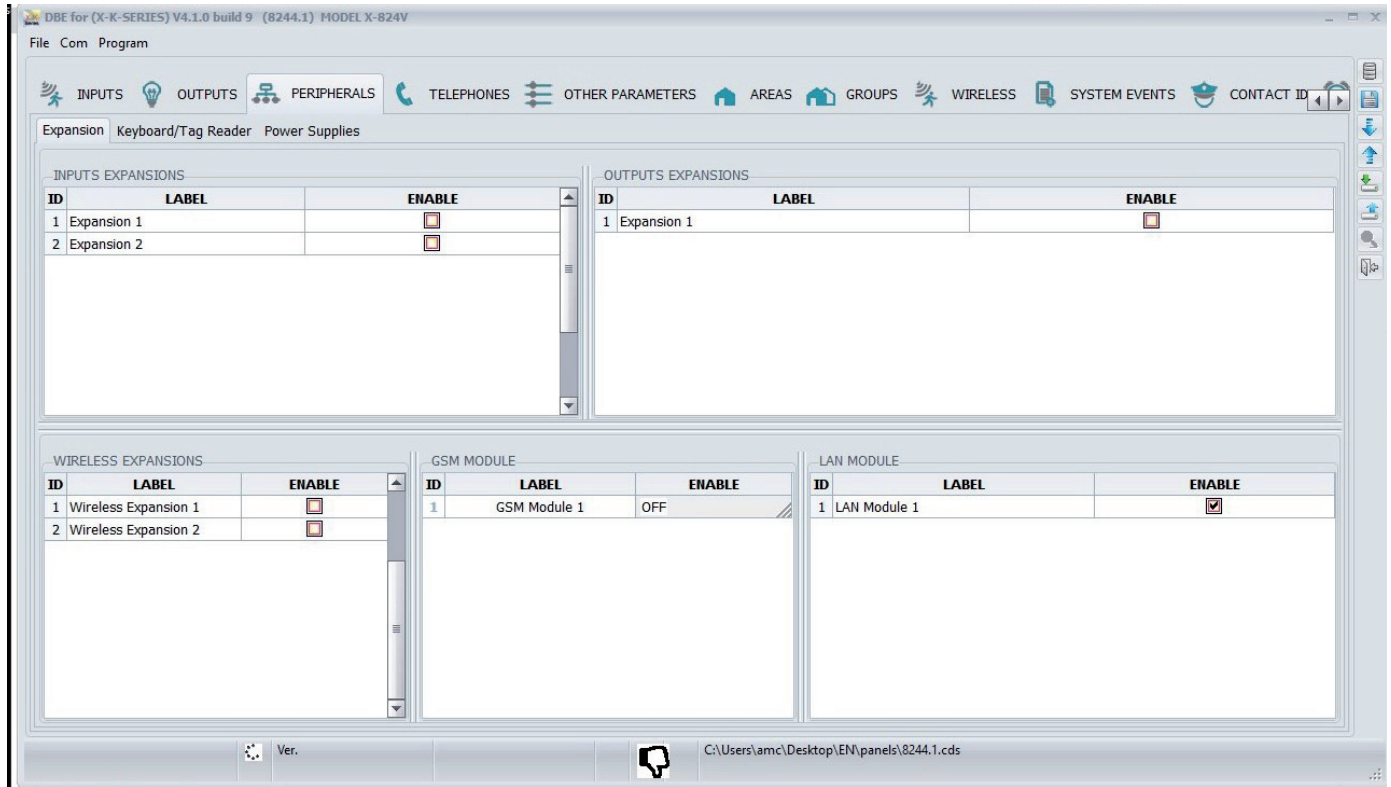
SPECIFICATIONS	ip board
<b>Power supply:</b>	5-13,8Vcc
<b>Current:</b>	163mA @ 12V
<b>LAN:</b>	10/100 BASE TX IEEE 802.1x Full Duplex
<b>PROTOCOL:</b>	Base: TCP/IP Encrypt: TLS/SSL Data: AMC Protocol V1.0 for system serie C-X-K
<b>LED:</b>	Yellow led falshing = WiFi working Yellow led OFF = WiFi module no work
<b>BUTTON:</b>	RESET = ONLY LAN BOARD
<b>classification</b>	ATS3/SP3 refered to EN 50136-2:2013 (to ensure the classification SP3 the periodic test call must be programmed for work every 30' minutes, or for have classification SP2, the periodic test call can be programmed for work every 25h)

## WIFI SPECIFICATIONS

<b>TX Frequency:</b>	2412-2472 MHz
<b>RX Frequency:</b>	2412-2472 MHz
<b>ITU Designation:</b>	G1D, D1D
<b>Output Power:</b>	19.29 dBm (802.11b), 17.99 dBm (802.11g), 18.72 dBm (802.11n20)
<b>Modulation:</b>	DSSS, OFDM
<b>Antenna:</b>	Integral Antenna, 2.0 dBi

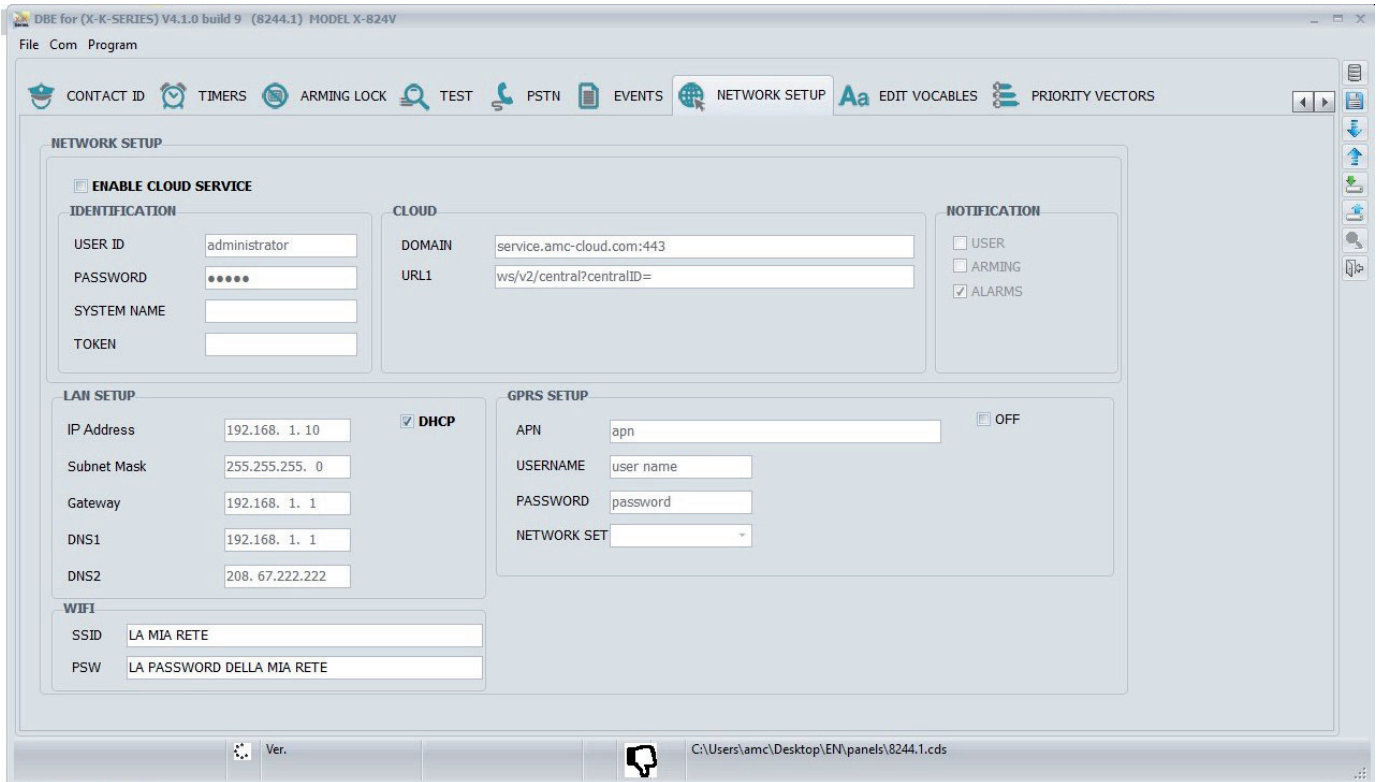
# IP-1W - SOFTWARE CONFIGURATION

On the peripherals tab, enable the LAN card as is usually done for the IP card (figure below)



On the network configuration tab, enable DHCP or assign a static IP, then in the WiFi section enter your network name and password (see photo below)

At this point the IP-1W card will connect to the network with credentials that have been assigned



# IP-1W - KEYPAD CONFIGURATION

Dopo aver inserito il codice installatore andare in menu periferiche e attivare il modulo (vedi figura)

**PERIPHERALS**  
**Module Ip / WiFi**

**MODULE**  
**1**

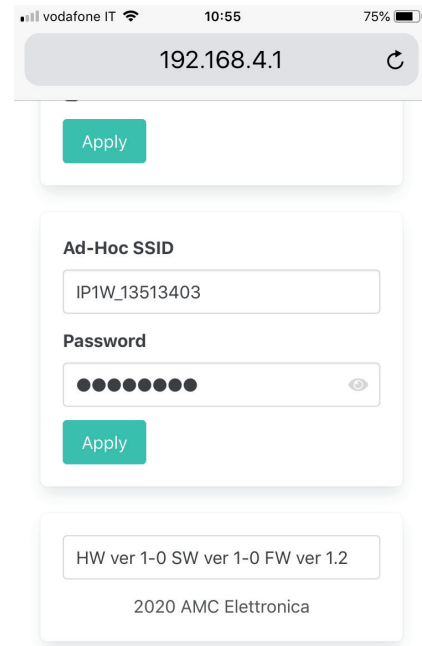
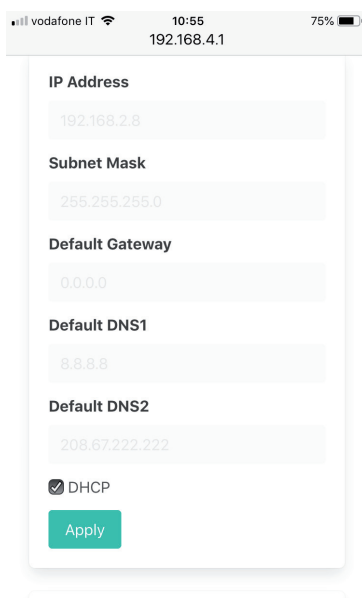
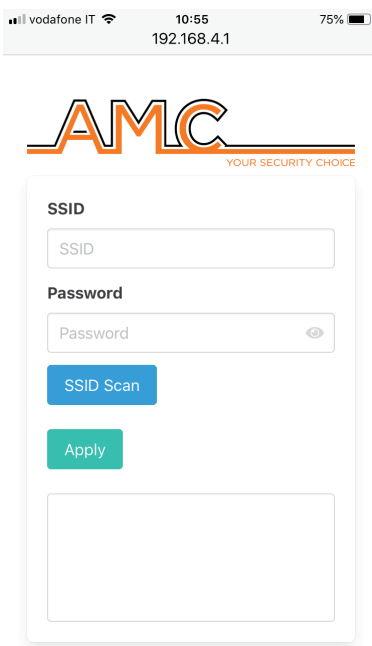
Andare nel menu PARAMETRI DI RETE e attivare la rete privata(vedi sotto)

**NETWORK PARAM.**  
**PRIVATE WiFi**

**NETWORK DISABLE**  
**V-ENABLE**

When the private network is activated, access the network with your mobile phone, the network will be IP1W\_12345645, the default password is **password**, once connected, open the phone browser and enter 192.168.4.1. At this point an HTML page will open where you can set the card (see figures below)

- use SSID scan to search your Wi-Fi network (fig1)
- once found, select and enter the password
- go down (fig 2) and select DHCP or set the static IP address
- if you can also change the private network name and password (risky and unnecessary)
- at this point press APPLY and close the browser
- go back to the control unit and disable the private network and exit all menus
- if the control panel has been correctly programmed to connect to the cloud it will do so



## MANUFATURER



AMC Elettronica s.a.s.

Via Pascoli 359

22040 Alzate Brianza

Como

Italy

Tel. +39031632780

Fax +39031632781

Info@amcelettronica.com

www.amcelettronica.com

