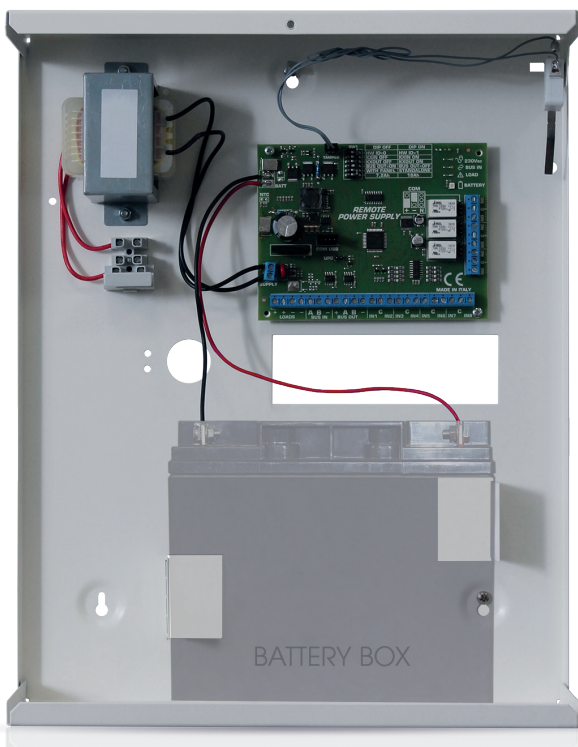




YOUR SECURITY CHOICE

KX AL

REMOTE POWER SUPPLY FOR K - X PANELS



INSTALLER MANUAL



IMPORTANT NOTES

- The following manual has been prepared to provide assistance to users who use the system. All those who use the systems listed in this manual must be authorized.
- The information contained in this document are property of AMC Elettronica s.r.l.
- All information contained in this document is subject to change without notice.
- Every part of this manual should be interpreted and used only for the purposes for which it was drafted, the use other than as prescribed must be authorized by AMC Elettronica srl, under penalty of forfeiture of the guarantee.
- All trademarks, symbols and examples contained in this manual belong to their respective owners.

GUARANTEE

AMC Electronics s.r.l. ensures that products are free from defects in workmanship.

The product is not installed by the manufacturer and can be used with other products not manufactured by AMC Elettronica srl, the manufacturer does not guarantee or be held responsible for damage and / or theft or other types of issues caused by an incorrect installation and / or configuration of the system.

Is not guaranteed to:

- improper use of the panel
- programming errors
- manipulation and vandalism
- wear and tear
- lightning, floods, fire.

AMC Electronics s.r.l. reserves the right to repair or replace the defective product within the limits established for 24 months.

A different use from that stated in this manual will void the warranty.

The installation must be performed in a workmanlike manner by qualified personnel.

COMPLIANCE

AMC Electronics s.r.l. declares that the X and K series alarm control unit are provisions of Directive 1999/5 /CE
On our web site www.amcelettronica.com

STANDARDS:

All products mentioned in this manual are in accordance with the rules:

EN 50131-1 + EN 50131-3 + EN 50131-6 (control and indicating equipment for alarm system)

Certifier: IMQ – Sistemi di sicurezza Grade: 2 Class:2

CONTENT OF THE METAL BOX

In the carton box there is:

- Metal box with inside:
 - KX AL board
 - Transformer
 - kit Tamper for antiopening and removal (mandatory for EN approval)
 - Earth cable
 - housing fuse
 - Balancing resistors (8 of 1K - 8 of 2K2)
 - plastic bag with screws and plastic turrets for fix all parts and close the box
 - Adesive data label
 - installer manual

The packaging does not contain:

- backup battery
- monitoring Software
- fisher for fix on the wall

the monitoring software and Installation manual can be downloaded from our site: www.amcelettronica.com

KX AL - REMOTE POWER SUPPLY

KXAL is a 30W remote power supply (13.8V @ 2.2A) compatible with X and K series control panels.

It's possible connect 2 KX AL per panel.

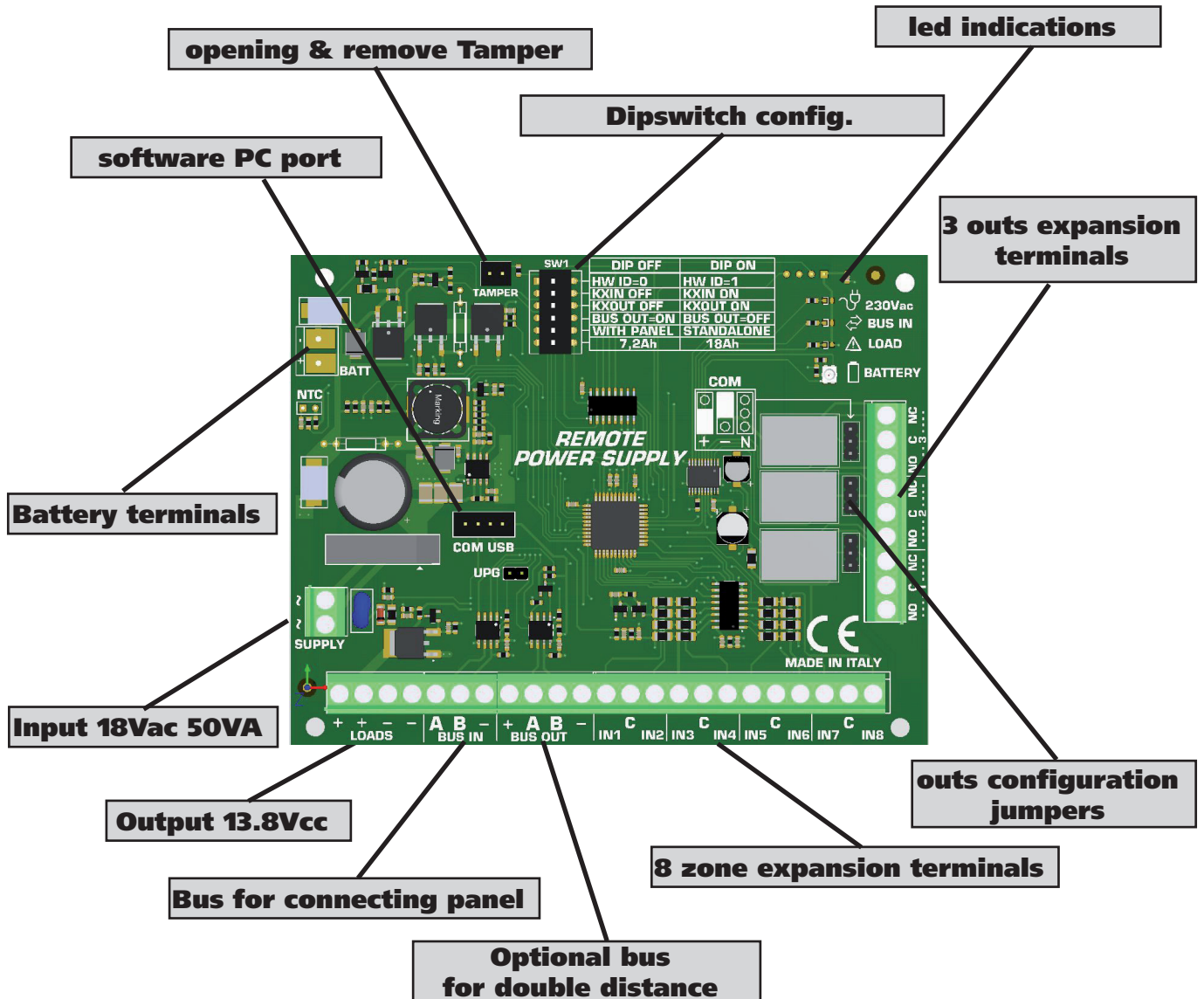
It is connect to the panel with BUS RS485 and it's possible to check voltage, current and all parameters of power supply.

It also integrates 1 KXIN expansion (8 inputs) and 1 KXOUT expansion (3 outputs relay).

KX AL is equipped with a bus repeater for increases the distance of peripheral connected.

It can also work in stand-alone mode, and with a simple software it's possible to check the operation (voltage, current and battery status).

KX AL - BOARD DESCRIPTION



KX AL - CONNECTED TO THE PANEL AND STARTING

For start to work with KX AL with panel, connect the RS485 bus (A & B terminals) from panel to the Bus in terminals of power supply.

- Select the address and operation mode with dip switch, use the rest of the dips for other requirement....
- Give main power of power supply.
- Go in peripheral for enable the power supply, and if you need enable input expansion KXIN and / or output KXOUT.
- After these operation you will see the info of power supply directly from panel keypad

KX AL - WORKING IN STANDALONE MODE

KX AL can be used in standalone mode, without connection with panel. It will work like a normal power supply, with 3 outs for troubles alert. For use in standalone mode set **dip-switch 5 in ON**. When it will work in this way the Bus terminals and the KX IN expansion will be disabled and the 3 outs of KX out will become alert outs (see the following specifications)

LED GREEN	MAIN POWER (18Vac)
Steady ON	Present
Off	Absent
LED YELLOW	BUS COMMUNICATION
Steady ON	Ok
Blink	Error
Off	Stand alone mode
LED RED	Overload protection
Steady Off	No overload
Blink	Overload
On	Short circuit
MULTI COLOR LED	BATTERY
Steady Off	Battery testing (from 20 to 100 seconds)
Steady Green	Battery OK
Orange	Recharging
Red Steady	Missed battery
Red Flash blink	Inverted terminals of battery
Red fast blink	Faulty battery
Red slow blink	low Battery voltage

DIP SWITCH	FUNCTION	OFF	ON
1	Address	0	1
2	Input expansion (KXIN)	Disable	Enable
3	Output expansion (KXOUT)	Disable	Enable
4	Enable Bus Out	Enable	Disable
5	Operation mode	With panel	Stand-Alone
6	Battery type (Recharge current)	7,2Ah (300mA)	18Ah (600mA)

OUTS USED IN STANDALONE MODE	FUNCTION	C-NO	C-NC
OUT 1	main power	ok	Fail
OUT 2	Battery	ok	Fail
OUT 3	Loads status	ok	Fail

SPECIFICATIONS	data
Input Voltage	230Vac +/- 10%
Output Voltage	13.8Vcc +/- 2%
Output Current Max	2.2A @ 300mA battery current recharge (default) 1.9A @ 600mA current recharge
Output Ripple Max	30mV
Backup Battery (lead-acid battery)	12V @ 18Ah - 12V @ 8Ah
Recharge time max (from 0% to 80%)	24h
protections	Tamper, Battery Reverse, Battery Fault, Overload, Shortcircuit, Overvoltage, Deep Discharge



AMC Elettronica s.r.l.
Via Pascoli 359
22040 Alzate Brianza
Como
Italy

www.amcelettronica.com

Tel. +39031632780
Fax +39031632781
Info@amcelettronica.com
www.amcelettronica.com



KX AL v.1.00